



**GMC**  
**Trans Mode**  
**VEHICLE**

**BODY BUILDERS DRAWINGS**  
**AND SUPPORTING DATA**



# TABLE OF CONTENTS

Introduction.....	2
Incomplete Vehicle Label & Documents.....	2
Federal Regulations—Tires.....	3
Vehicle Loading Instructions.....	4-6
Body Builder Drawing 23'	
Body Builder Drawing 26'	
Chassis Wiring Diagram	

This book has been designed as a source of basic information for the many manufacturers of equipment to be installed into the GMC TransMode Vehicle. It has been prepared to provide Body Builder Instruction drawings, a wiring diagram, and Vehicle Loading Instructions.

If you require additional data please contact MotorHome Sales Engineer, GMC Truck & Coach Division, 660 South Boulevard East, Pontiac, Michigan 48053.



PUBLISHED: APRIL, 1976

**GMC TRUCK & COACH DIVISION**  
GENERAL MOTORS CORPORATION  
660 South Boulevard East  
PONTIAC, MICHIGAN 48053



## INTRODUCTION

THE FEDERAL GOVERNMENT HAS ESTABLISHED MOTOR VEHICLE SAFETY STANDARDS for various categories of motor vehicles and motor vehicle equipment under the provisions of the National Traffic and Motor Vehicle Safety Act of 1966. The Act imposes important legal responsibilities on manufacturers, dealers, body builders and others engaged in the manufacturing and marketing of motor vehicles and motor vehicle equipment. Questions dealing with the specific application of the Act or the standards to your business should be dis-

cussed with your legal counsel. This is particularly so because the standards and other requirements or interpretations are subject to change by the government agency in charge, the National Highway Traffic Safety Administration. New standards and amendments issued by the National Highway Traffic Safety Administration will appear in the Federal Register from time to time.

You may obtain the Federal Register, through the Superintendent of Documents, U.S. Government Printing Office, Washington, D.C. 20402.

**Incomplete Vehicles**—Will have an incomplete vehicle label affixed to document for Incomplete Vehicles. Accompanying and attached to the inside cover of this document is the Incomplete Vehicle Document Supplement for GMC Commercial TransMode Vehicle. These documents are placed in a clear container, and shipped with the vehicle from the factory.

### DOCUMENT FOR INCOMPLETE VEHICLE

INCOMPLETE VEHICLE MANUFACTURED BY	
GENERAL MOTORS CORP.	
DETROIT, MICHIGAN 48202	MONTH/YEAR:
VIN	
GVWR	
GAWR FRONT	
GAWR 1ST INT.	
GAWR 2ND INT.	
GAWR REAR	
THIS INCOMPLETE VEHICLE MAY BE COMPLETED INTO A "TRUCK" "MULTIPURPOSE PASSENGER VEHICLE", OR "BUS"	
328073	

This document is furnished as required by government regulation to aid intermediate and final stage manufacturers in determining conformity to applicable Motor Vehicle Safety Standards. This document is not a substitute for knowledge of the requirements of these standards. Intermediate and final stage manufacturers should maintain current familiarity with all Motor Vehicle Safety Standards to be aware of their specific responsibilities as manufacturers in regard to each standard.

Any manufacturer that makes material alterations to this incomplete vehicle during the process of manufacturing the complete vehicle should be constantly vigilant to recognize all the effects, either direct or indirect, on other components, assemblies or systems caused by each such alteration. No alteration should be made to the incomplete vehicle which either directly or indirectly results in any component, assembly or system being in nonconformance with any applicable Motor Vehicle Safety Standard.

#### CANADA MOTOR VEHICLE SAFETY STANDARDS

The following statement, which is required by Section 6. (3) (a) of the Canadian Motor Vehicle Safety Regulations is applicable only to incomplete vehicles manufactured in or imported into Canada: THIS INCOMPLETE VEHICLE CONFORMS TO THE APPLICABLE CANADA MOTOR VEHICLE SAFETY STANDARDS IN EFFECT ON THE DATE OF ITS MANUFACTURE SHOWN ABOVE. THE STANDARDS TO WHICH THIS INCOMPLETE VEHICLE CONFORMS IN FULL ARE DESIGNATED IN THE LIST OF FEDERAL MOTOR VEHICLE SAFETY STANDARDS ON PAGE 1 BY AN ASTERISK (\*) IN THE COLUMN FOR THE BASIC TYPE OF INCOMPLETE VEHICLE.



PRINTED IN U. S. A.

1

460309

**Models:** Incomplete TransMode. Vehicles, ZE06083 (23') & ZE06583 (26')

## **FEDERAL REGULATIONS—TIRES**

The National Highway Traffic Safety Administration has issued regulations dealing with tire identification and record keeping which became effective May 22, 1971. Under these regulations important legal responsibilities are imposed upon tire manufacturers, brand name owners, retreaders, distributors and dealers, and motor vehicle manufacturers and dealers, to maintain and/or report certain information concerning tires. This information will be used to facilitate the notification of purchasers of defective or non-conforming tires so that they may take appropriate action in the interest of safety. If you have any questions concerning the application of these regulations to your business, we suggest you consult with your attorney.

In order for GM to meet its responsibility under these tire regulations, we have a record of the tires on each vehicle we shipped to you. If you do not change a tire on a GM vehicle, it is important that you make sure that it is reshipped with the same tires that were on it when the vehicle was received by you. This will mean that any tires which you remove from a vehicle during the course of your work should be put back on the same vehicle.

If you do change a tire on a GM vehicle, it is necessary that you furnish us with such information on vehicles which are returned to us after you have completed your work. It is important that you report to us the full tire identification number (TIN) for each tire you install and the full vehicle identification number (VIN) of the vehicle on which the tire is installed.

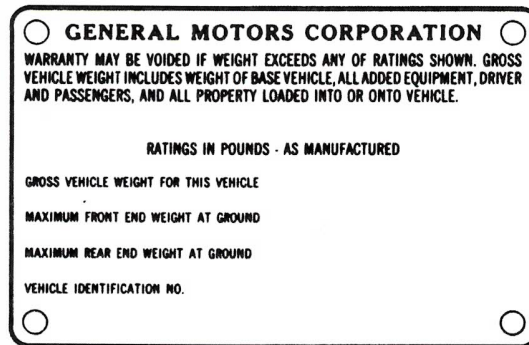
In case you should receive a defect notification from a tire manufacturer concerning tires which you installed on a vehicle returned to us, you may forward it to us so that we can send it to the vehicle owner whose name will appear in our records.



## VEHICLE LOADING

A vehicle identification number plate is attached to each TransMode Vehicle and shows the Gross Vehicle Weight

Rating (or GVWR) and the front and rear Gross Axle Weight Ratings (or GAWR's) for each particular vehicle.



### *Vehicle Identification Plate*

The Gross Vehicle Weight Rating (GVWR) represents the recommended maximum weight of the completed vehicle and its total load. This total load includes all items added to the vehicle after it has left the factory, all fluids, the driver and occupants of designated seating positions and everything and anything that is loaded into (or onto) the vehicle.

The Gross Axle Weight Ratings (GAWR's) represent the recommended maximum weight that each axle system can carry. These capacities include by axle, all of the same items considered in the determination of the Gross Vehicle Weight Rating.

To provide satisfactory and safe service the actual weight of a completed vehicle and its total load should never exceed its GVWR, and the sum of a vehicle's GAWR's should always equal or exceed its GVWR. Therefore if the sum of a vehicle's GAWR's equals its GVWR then each axle may be loaded to its maximum capacity, since the

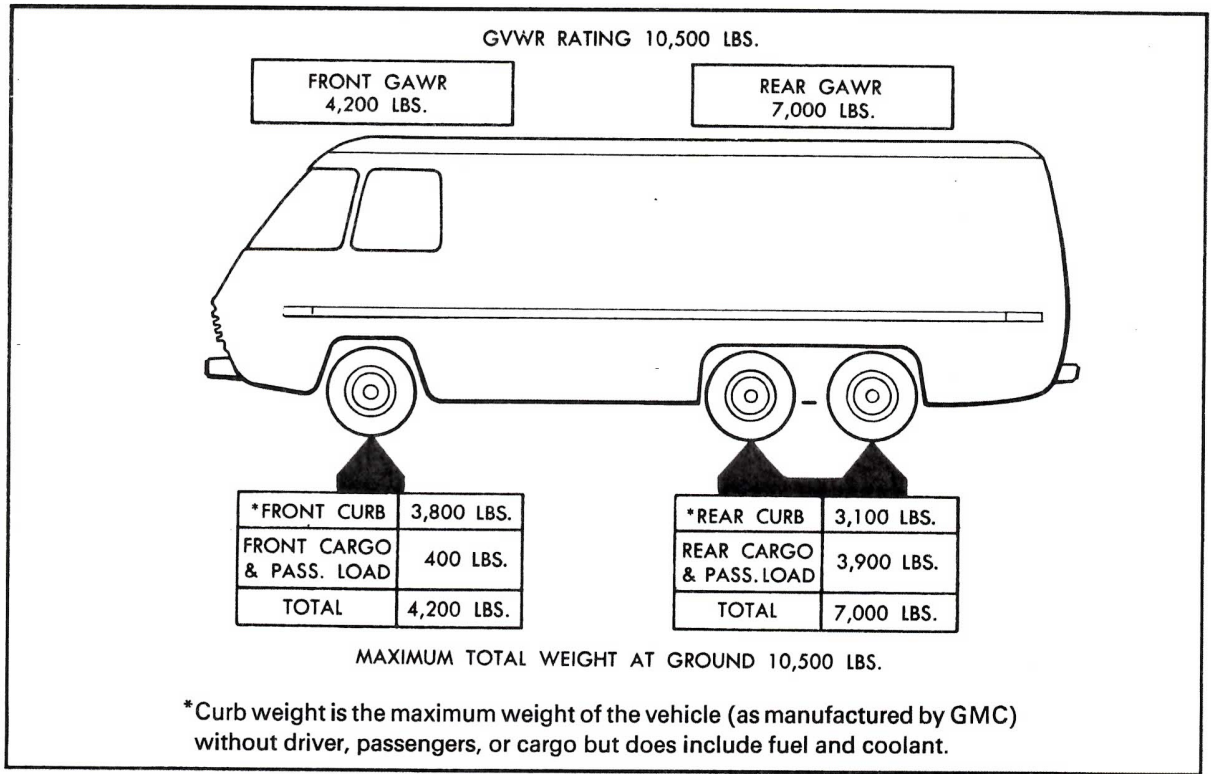
GVWR on such vehicle would not be exceeded.

If the sum of a vehicle's GAWR's exceeds its GVWR then each axle may not be loaded to its maximum capacities, since the GVWR on such a vehicle would be improperly exceeded, but each axle could be loaded so that the sum of the weights over each axle does not exceed the vehicle's GVWR.

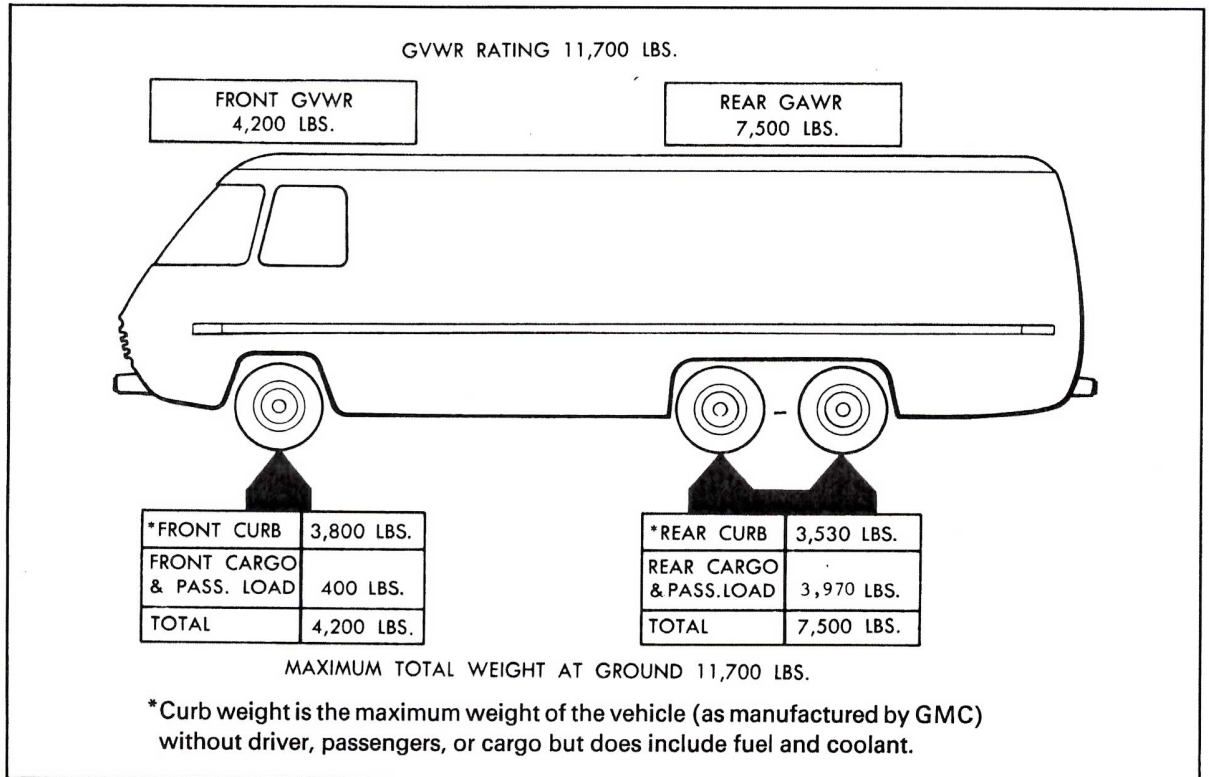
A GMC Motor Home Dealer can advise you concerning proper loading conditions of your vehicle.

Actual front and rear end weights at the ground can only be determined by weighing the vehicle. This can be accomplished through highway weigh stations or other such commercial facilities. For assistance in this regard, consult a GMC MotorHome Dealer. Care should also be exercised to see that the cargo load is distributed on both sides of the centerline of the vehicle as equally as possible.

## VEHICLE LOADING (Continued)



23' ZE06083



26' ZE06583



## VEHICLE LOADING (Continued)

### EFFECT ON WARRANTY

Your new Vehicle Warranty does not apply to any part of your vehicle "which has been subject to misuse". Any part which fails because of overloading has been subject to misuse within the meaning of this provision of the warranty.

#### ALLOWABLE LATERAL WEIGHT VARIATION

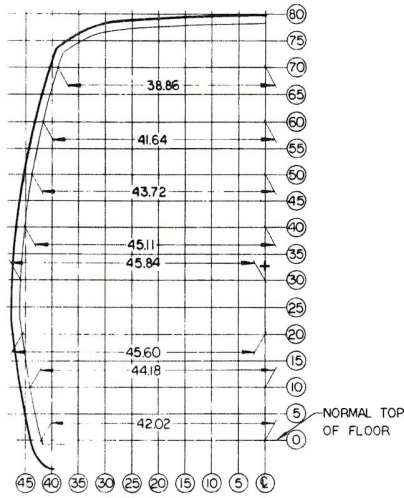
The independent suspension on this vehicle could be adversely affected by an unbalanced load on either side of the vehicle. The allowable front lateral weight variation is 250 lbs. The allowable rear lateral weight variation is 600 lbs.

COMMERCIAL TRANSMODE VEHICLE WEIGHT DISTRIBUTION		
	23 FT.	26 FT.
Front GAWR	4,200	4,200
Rear GAWR	7,000	7,500
GVWR	10,500	11,700
Allowable Front Lateral Weight Variation	250	250
Allowable Rear Lateral Weight Variation	600	600

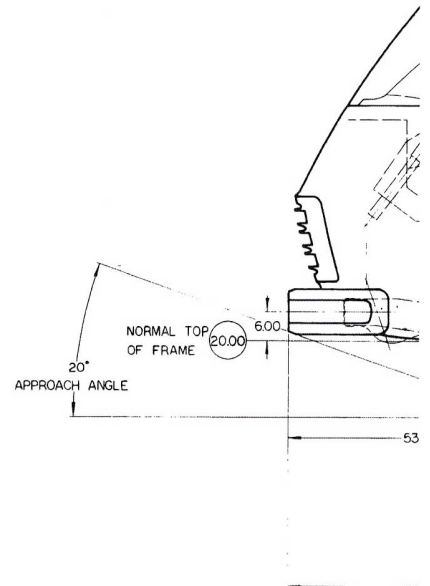
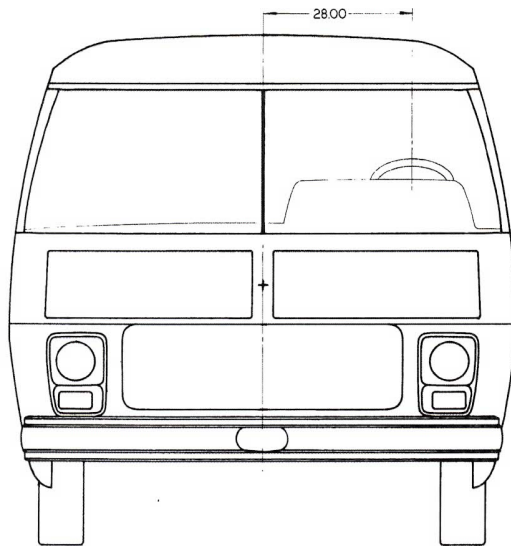
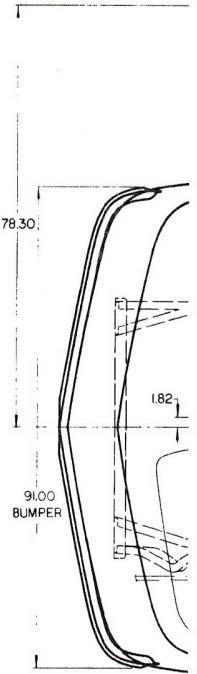
**NOTE:** When using your vehicle to transport luggage or other cargo, it is recommended that the articles be secured in place. This precaution will help prevent such items from becoming dangerous projectiles in the event of an accident.

#### TIRES

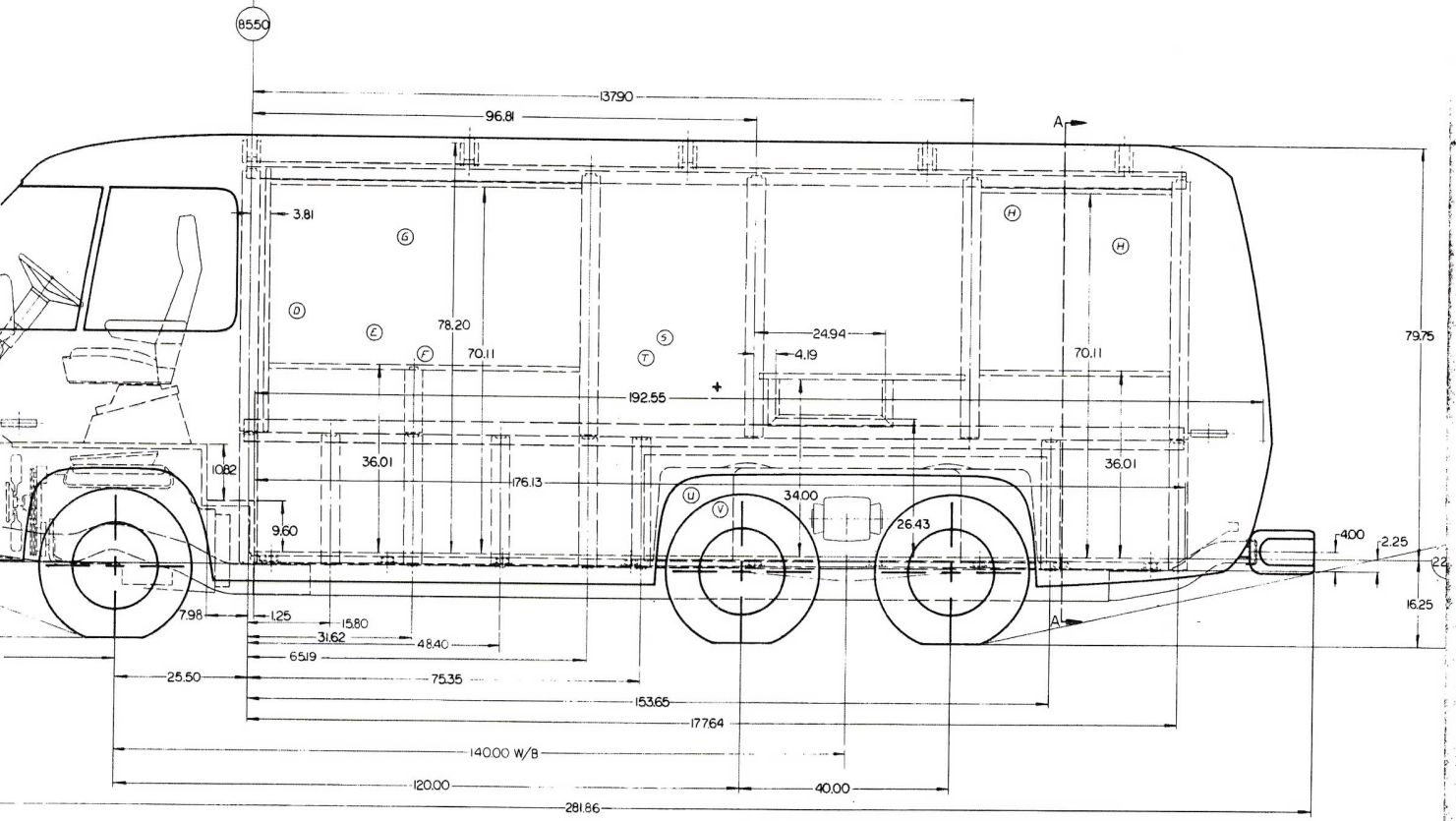
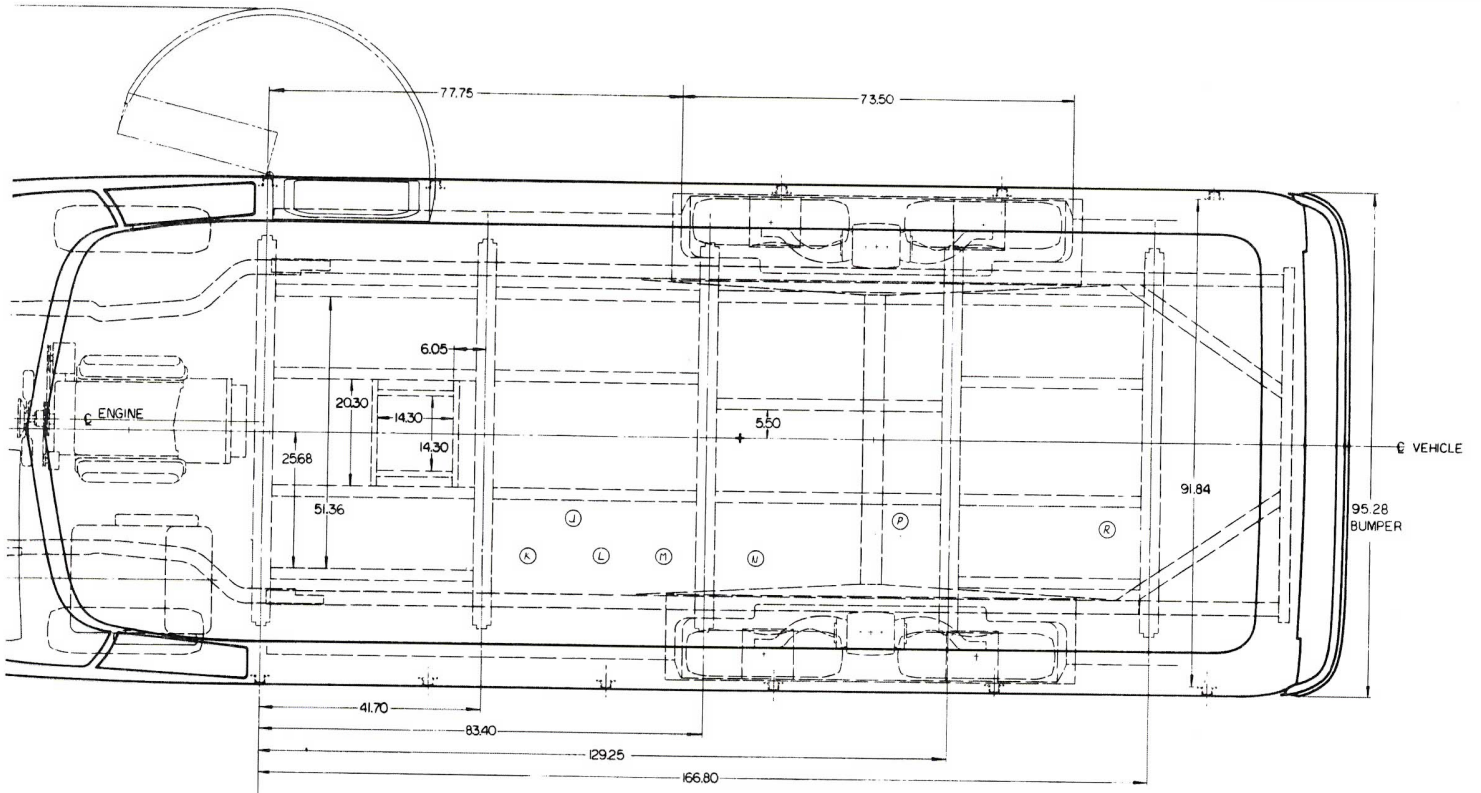
It is important that the tires on your vehicle be of the proper size, and be properly inflated. It is important to avoid over-inflation as well as under-inflation. See the Service and Maintenance section for proper tire inflation pressures.



SECTION A-A  
TYPICAL BODY CONTOUR SECTION  
R.H. SHOWN-L.H. SYM. OPPOSITE

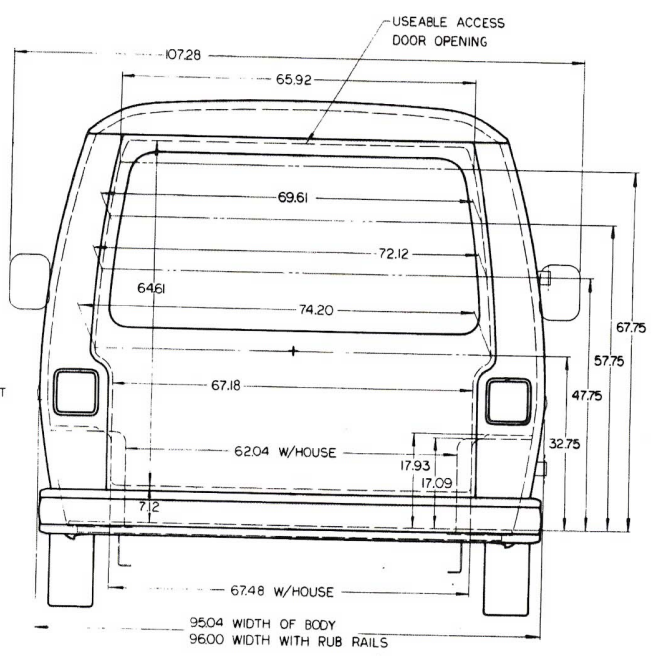






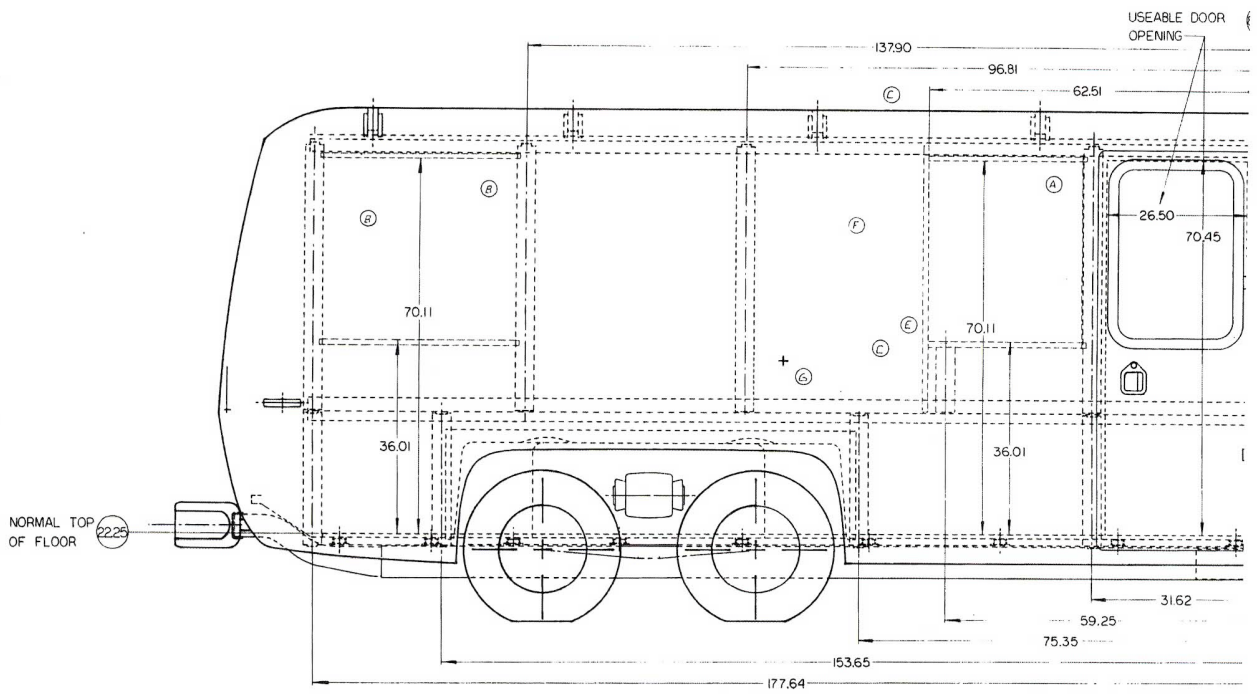
(U) (V) (W)  
 PART NO. MD 12761  
 REV. SHEET 1 OF 2  
 H FRAME 2 OF 3  
 (D) (E) (G) (F) (A) (L) (J) (M) (T) (K) (H) (C) (H)

REV	DATE	DESCRIPTION	BY	CHK	APP
1	07/27/74	PRELIMINARY RELEASE			
2		BENCH A RE-DRAWN AND STRUCTURE REVISED			
3		BENCH B SHEET 2 ADDED			
4		BENCH C DIMENSIONS ADDED			
5		ADD 1/4" DIA. HOLES TO REAR BUMPER			
6		ADD 1/4" DIA. HOLES TO REAR BUMPER			
7		ADD 1/4" DIA. HOLES TO REAR BUMPER			
8		ADD 1/4" DIA. HOLES TO REAR BUMPER			
9		ADD 1/4" DIA. HOLES TO REAR BUMPER			
10		ADD 1/4" DIA. HOLES TO REAR BUMPER			
11		ADD 1/4" DIA. HOLES TO REAR BUMPER			
12		ADD 1/4" DIA. HOLES TO REAR BUMPER			
13		ADD 1/4" DIA. HOLES TO REAR BUMPER			
14		ADD 1/4" DIA. HOLES TO REAR BUMPER			
15		ADD 1/4" DIA. HOLES TO REAR BUMPER			
16		ADD 1/4" DIA. HOLES TO REAR BUMPER			
17		ADD 1/4" DIA. HOLES TO REAR BUMPER			
18		ADD 1/4" DIA. HOLES TO REAR BUMPER			
19		ADD 1/4" DIA. HOLES TO REAR BUMPER			
20		ADD 1/4" DIA. HOLES TO REAR BUMPER			



REV	DATE	DESCRIPTION	BY	CHK	APP
1	03-25-74	SCALE 1/8"			
2E	06083				
REFERENCE					
MATERIAL					
NAME	BODY BUILDERS'	23			
PART NO.	MD 12761				
	SHEET 1 OF 2				
	MD 12761				





PART NO. MD12761  
 REV. SHEET 2 OF 2  
 FRANK 2 OF 2

5

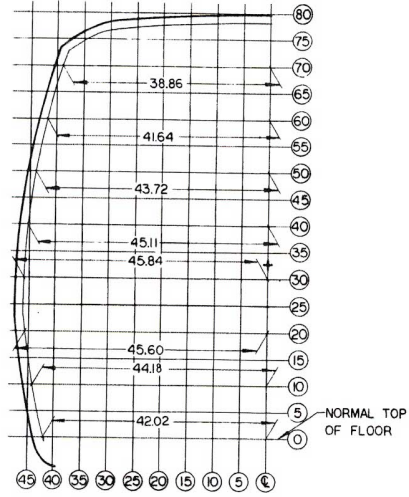
1

2 3 4 5

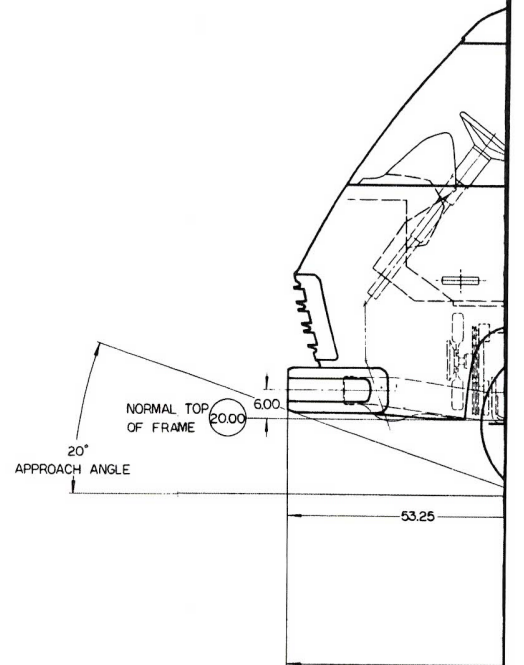
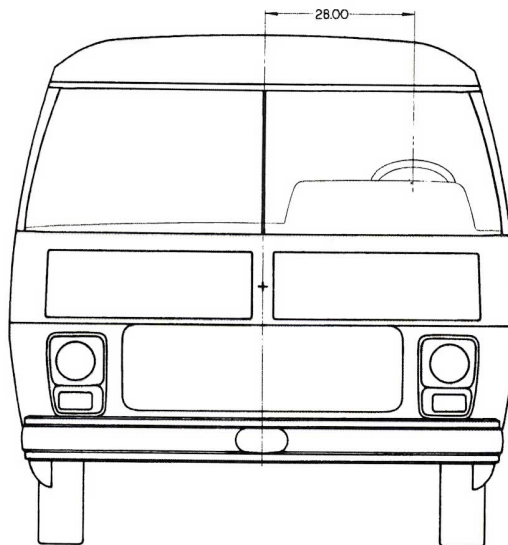
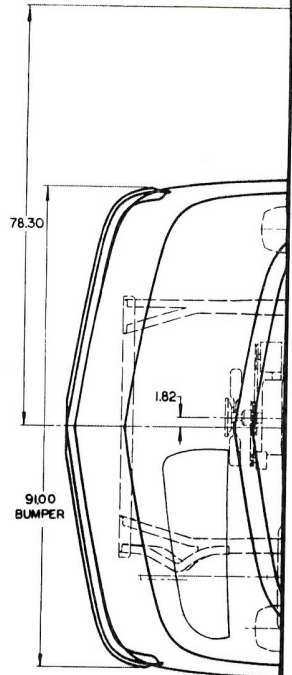
6

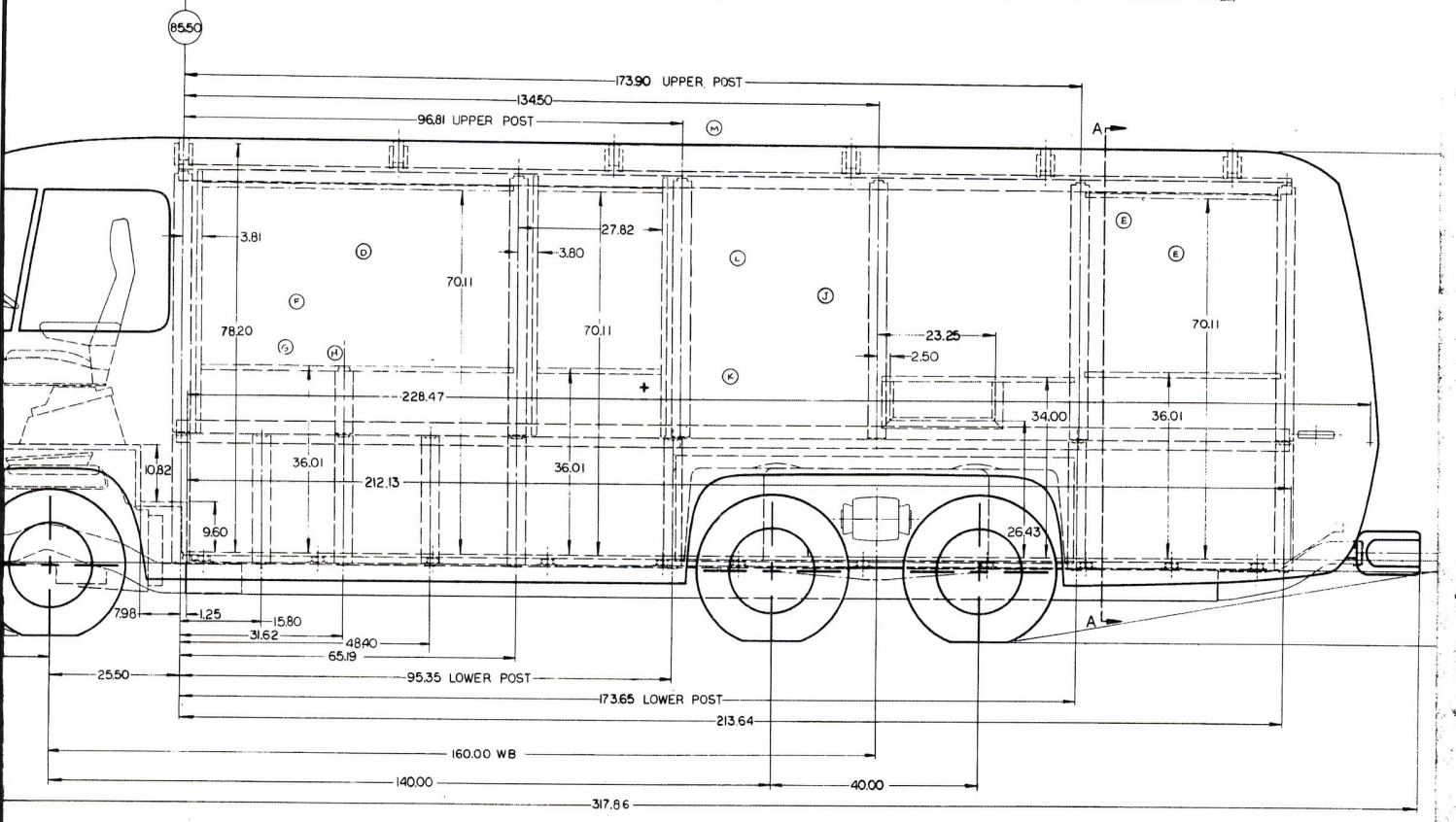
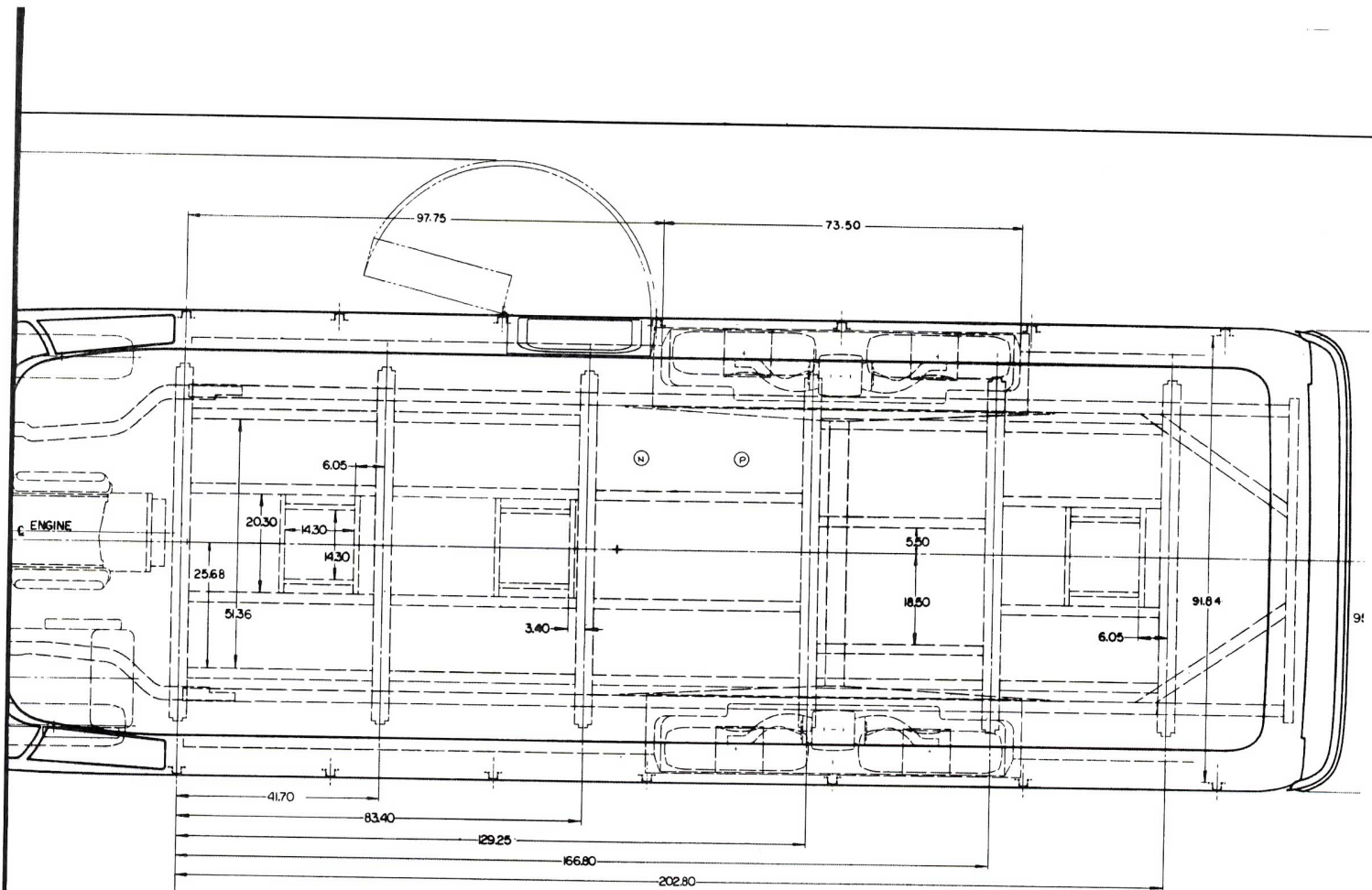






SECTION A-A  
TYPICAL BODY CONTOUR SECTION  
R.H. SHOWN-LH. SYM OPPOSITE



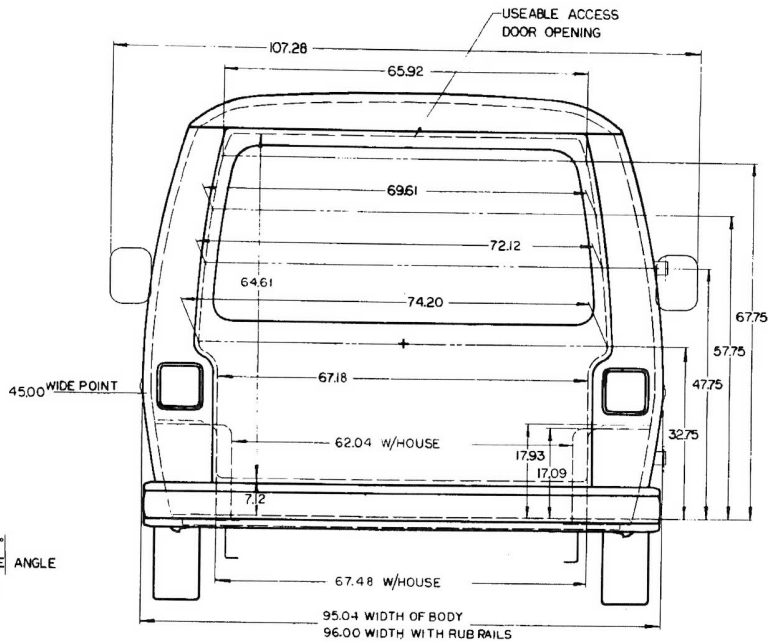
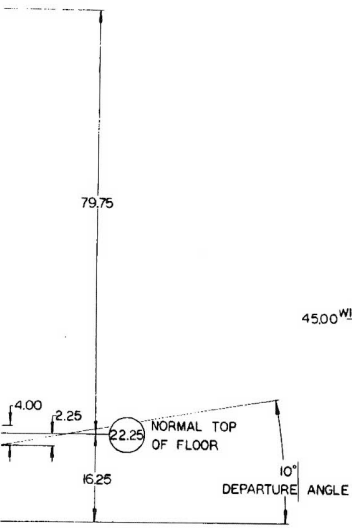
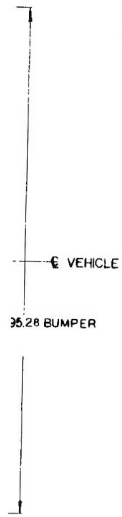


①  
②  
③

PART NO. MD 12760  
REV. 1  
P  
FRAME 2 OF 3

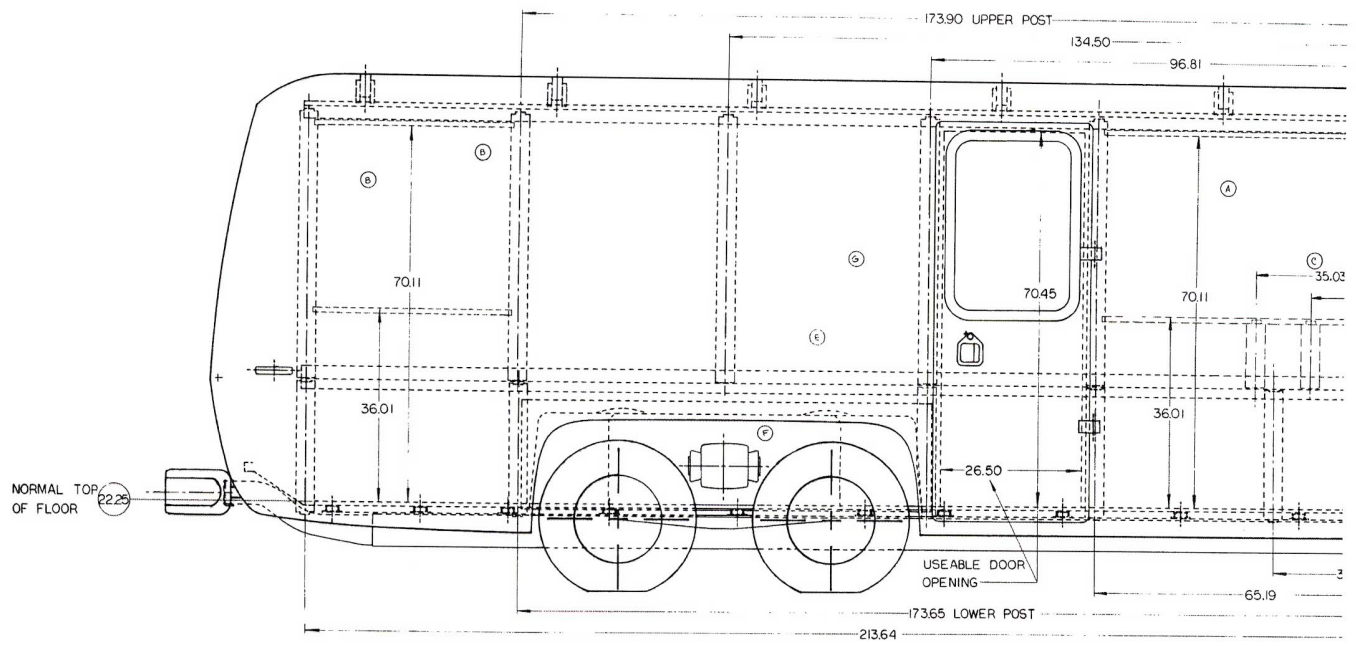
④  
⑤

REV	NO	DESCRIPTION	DATE	BY	CHK
1	1	REBORN AND STRUCTURE REVISED	2/26/74	...	...
2	2	ADD L & R ADJ. DIMS	2/26/74	...	...
3	3	ADD DIMENSIONS ADJ. DIMS	2/26/74	...	...
4	4	ADD L & R DIMS	2/26/74	...	...
5	5	ADD L & R DIMS	2/26/74	...	...
6	6	ADD L & R DIMS	2/26/74	...	...
7	7	ADD L & R DIMS	2/26/74	...	...
8	8	ADD L & R DIMS	2/26/74	...	...
9	9	ADD L & R DIMS	2/26/74	...	...
10	10	ADD L & R DIMS	2/26/74	...	...
11	11	ADD L & R DIMS	2/26/74	...	...
12	12	ADD L & R DIMS	2/26/74	...	...
13	13	ADD L & R DIMS	2/26/74	...	...
14	14	ADD L & R DIMS	2/26/74	...	...
15	15	ADD L & R DIMS	2/26/74	...	...
16	16	ADD L & R DIMS	2/26/74	...	...
17	17	ADD L & R DIMS	2/26/74	...	...
18	18	ADD L & R DIMS	2/26/74	...	...
19	19	ADD L & R DIMS	2/26/74	...	...
20	20	ADD L & R DIMS	2/26/74	...	...



DATE	3/21/74	SCALE	1/8"
FIRST USE	2E 06583	DATE	3/21/74
REFERENCE	1 100/106	DATE	3/21/74
MATERIAL		DATE	3/21/74
NAME	BODY BUILDERS'	DATE	3/21/74
PART NO	MD 12760	DATE	3/21/74
SHEET	1 OF 2	DATE	3/21/74





NORMAL TOP OF FLOOR 22.25

173.90 UPPER POST

134.50

96.81

(B)

(B)

70.11

36.01

(E)

(E)

70.45

(A)

70.11

(C)

35.03

36.01

26.50

USEABLE DOOR OPENING

3

65.19

173.65 LOWER POST

213.64

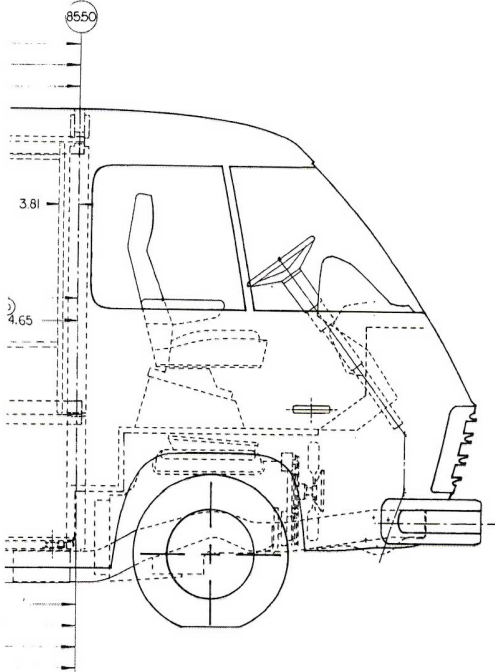
PART NO. MD12760  
 REV G SHEET 2 OF 2  
 FRAME 2 OF 2

(E) (L) (G)

(A)

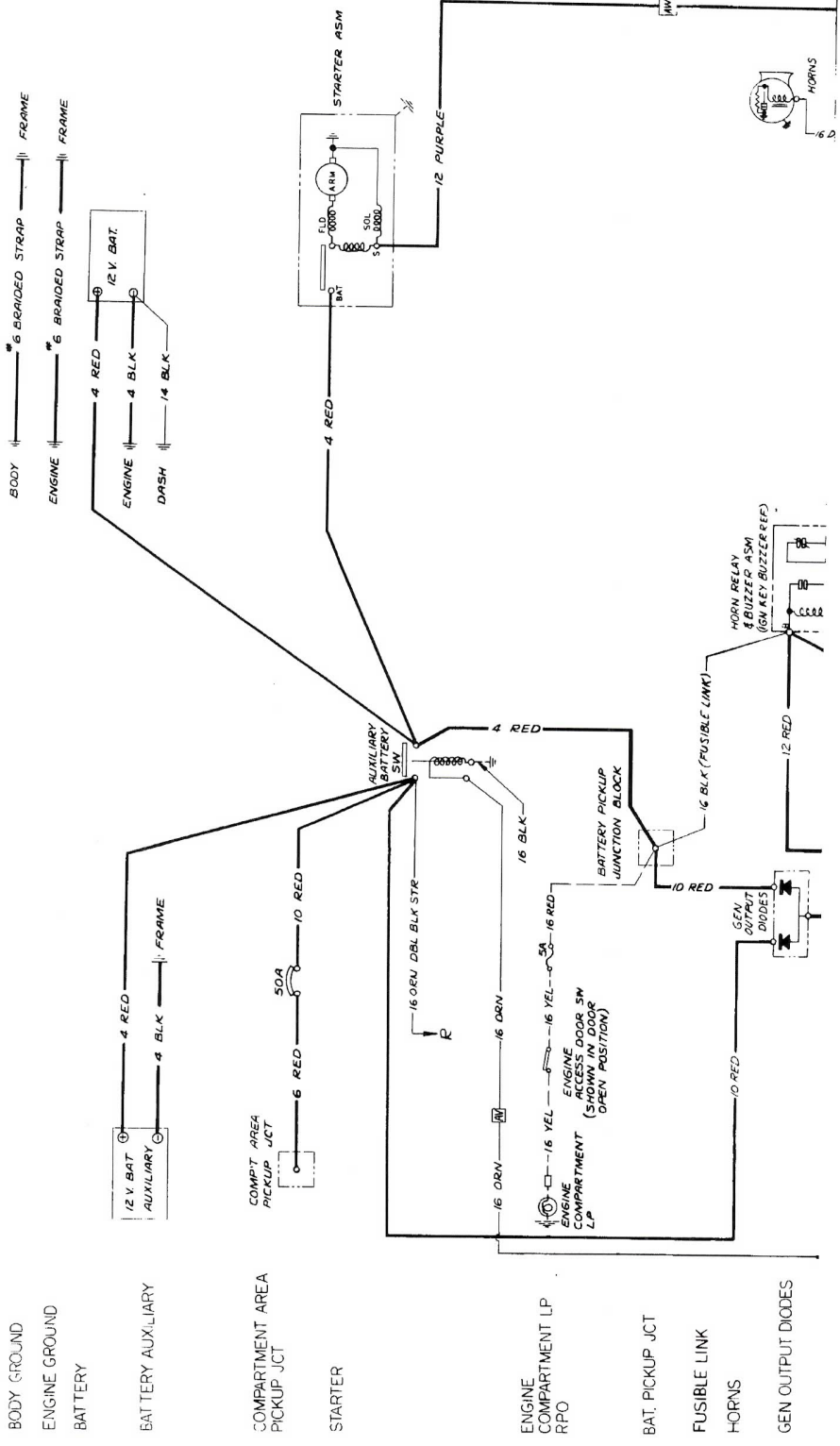
(C)

DATE	REVISION RECORD	APPL	DR	QC	PL
2/2/74	ASSEMBLY PART REMOVED	22222	12	12	12
	1. 1.81.1 DIMS AND S				
	2. SWIRL REMOVED	22222			
	3. 2.00.0 WRS AND S1	22222			
	4. 2.4.6.6 WRS 1.8.8	22222			
	5. 2.0.2.5 D.M. 2.1	22222			
	6. 2.0.1.5 D.M. 2 SWDPT	22222			
	7. 2.2.81.1.5.81 DIMS 7	22222			
	8. 2.2.81.1.5.81 DIMS 7	22222			
	9. 2.2.81.1.5.81 DIMS 7	22222			
	10. 2.2.81.1.5.81 DIMS 7	22222			
	11. 2.2.81.1.5.81 DIMS 7	22222			
	12. 2.2.81.1.5.81 DIMS 7	22222			
	13. 2.2.81.1.5.81 DIMS 7	22222			
	14. 2.2.81.1.5.81 DIMS 7	22222			
	15. 2.2.81.1.5.81 DIMS 7	22222			
	16. 2.2.81.1.5.81 DIMS 7	22222			
	17. 2.2.81.1.5.81 DIMS 7	22222			
	18. 2.2.81.1.5.81 DIMS 7	22222			
	19. 2.2.81.1.5.81 DIMS 7	22222			
	20. 2.2.81.1.5.81 DIMS 7	22222			
	21. 2.2.81.1.5.81 DIMS 7	22222			
	22. 2.2.81.1.5.81 DIMS 7	22222			
	23. 2.2.81.1.5.81 DIMS 7	22222			
	24. 2.2.81.1.5.81 DIMS 7	22222			
	25. 2.2.81.1.5.81 DIMS 7	22222			
	26. 2.2.81.1.5.81 DIMS 7	22222			
	27. 2.2.81.1.5.81 DIMS 7	22222			
	28. 2.2.81.1.5.81 DIMS 7	22222			
	29. 2.2.81.1.5.81 DIMS 7	22222			
	30. 2.2.81.1.5.81 DIMS 7	22222			



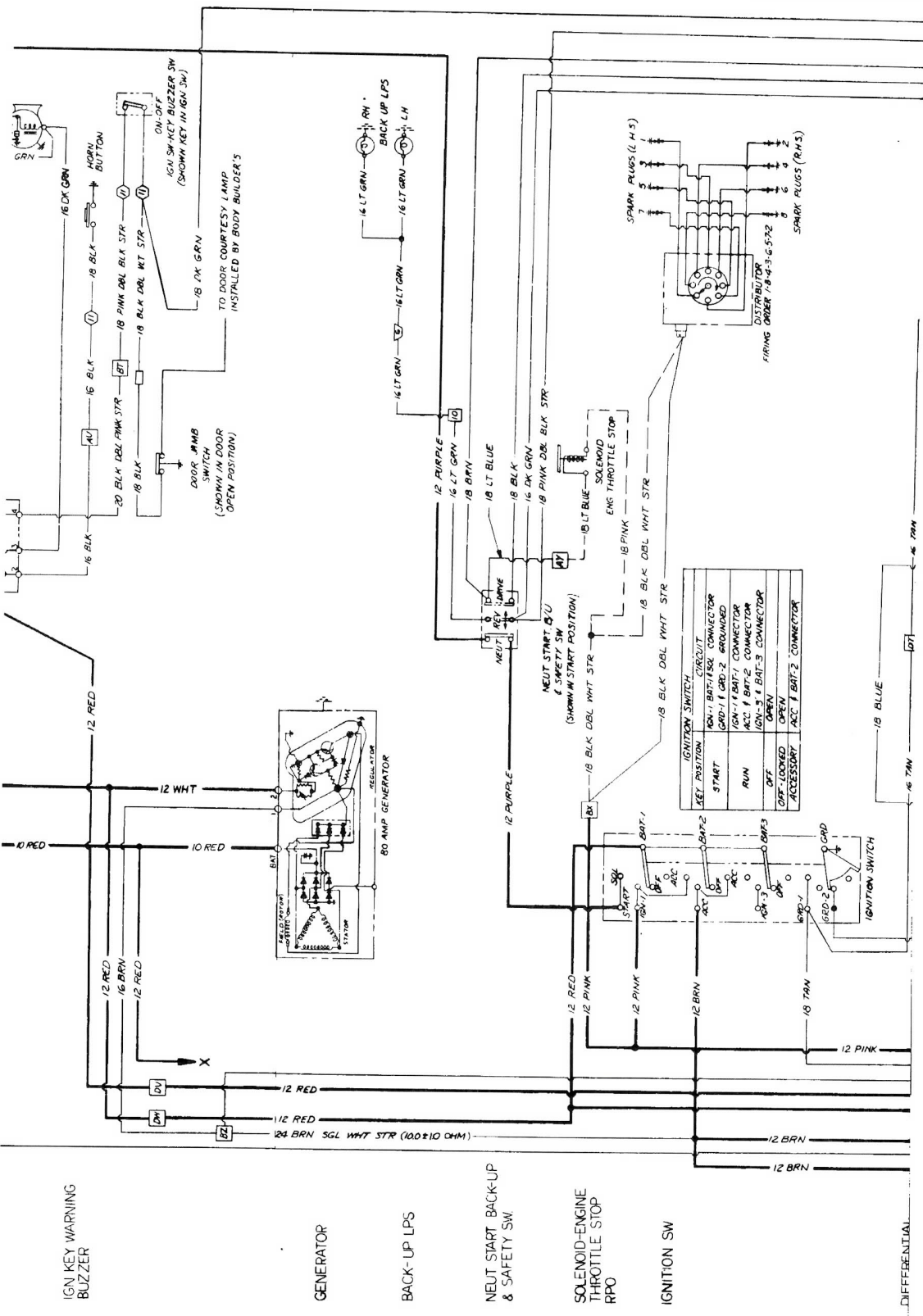
REV	DATE	BY	CHKD	APP
1	8-19-74	SCALE 1/8"		
PART NO. ZE 06583				
REFERENCE L 6006				
MATERIAL				
SERVICE DETERMINATION/S				
NAME BODY BUILDERS' 26				
PART NO. MD 12760				
SHEET 2				

REV	DATE	BY	CHKD	APP
1	8-19-74	SCALE 1/8"		
PART NO. ZE 06583				
REFERENCE L 6006				
MATERIAL				
SERVICE DETERMINATION/S				
NAME BODY BUILDERS' 26				
PART NO. MD 12760				
SHEET 2				



- BODY GROUND
- ENGINE GROUND
- BATTERY
- BATTERY AUXILIARY
- COMPARTMENT AREA PICKUP JCT
- STARTER
- ENGINE COMPARTMENT LP RPO
- BAT. PICKUP JCT
- FUSIBLE LINK
- HORNS
- GEN OUTPUT DIODES





IGNI KEY WARNING BUZZER

GENERATOR

BACK-UP LPS

NEUT START BACK-UP & SAFETY SW

SOLENOID-ENGINE THROTTLE STOP RPO

IGNITION SW

DIFFERENTIAL

DIFFERENTIAL BRAKE SW

LOW COOLANT PROBE

TRANSMISSION CONTROL

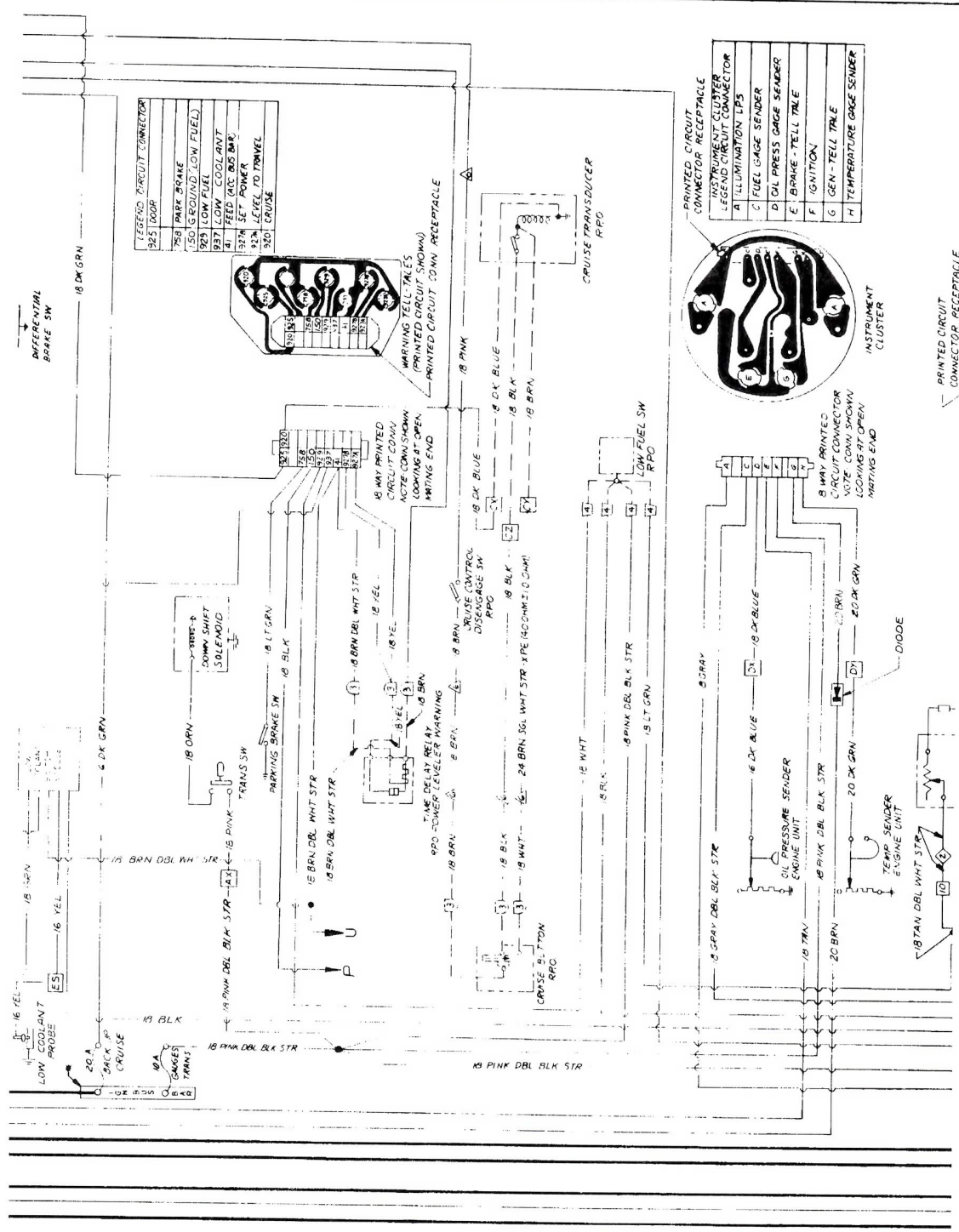
WARNING TELL-TALES

POWER LEVELER WARNING RPO

CRUISE CONTROL RPO

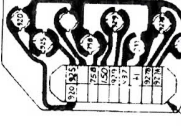
LOW FUEL INDICATOR RPO

INSTRUMENT CLUSTER



LEGEND CIRCUIT CONNECTOR

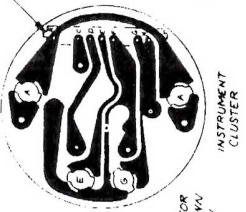
26	PARK BRAKE
27	GROUND LOW FUEL
28	LOW FUEL
29	COOLANT
30	FEED BACK
31	SET POWER
32	LEVEL TO TRAVEL



PRINTED CIRCUIT CONNECTOR RECEPTACLE

INSTRUMENT CLUSTER  
LEGEND CIRCUIT CONNECTOR

A	ILLUMINATION LPS
C	FUEL GAGE SENDER
D	DAI PRESS GAGE SENDER
E	BRAKE - TELL TALE
F	IGNITION
G	GEN - TELL TALE
H	TEMPERATURE GAGE SENDER



8 WAY PRINTED CIRCUIT CONNECTOR  
NOTE: CONN. SHOWN LOCKING AT OPEN MATING END

1	18 GRAY DBL BLK STR
2	18 DK BLUE
3	18 BRN
4	18 DK GRN
5	18 TAN DBL WHT STR
6	18 TAN DBL WHT STR
7	18 TAN DBL WHT STR
8	18 TAN DBL WHT STR

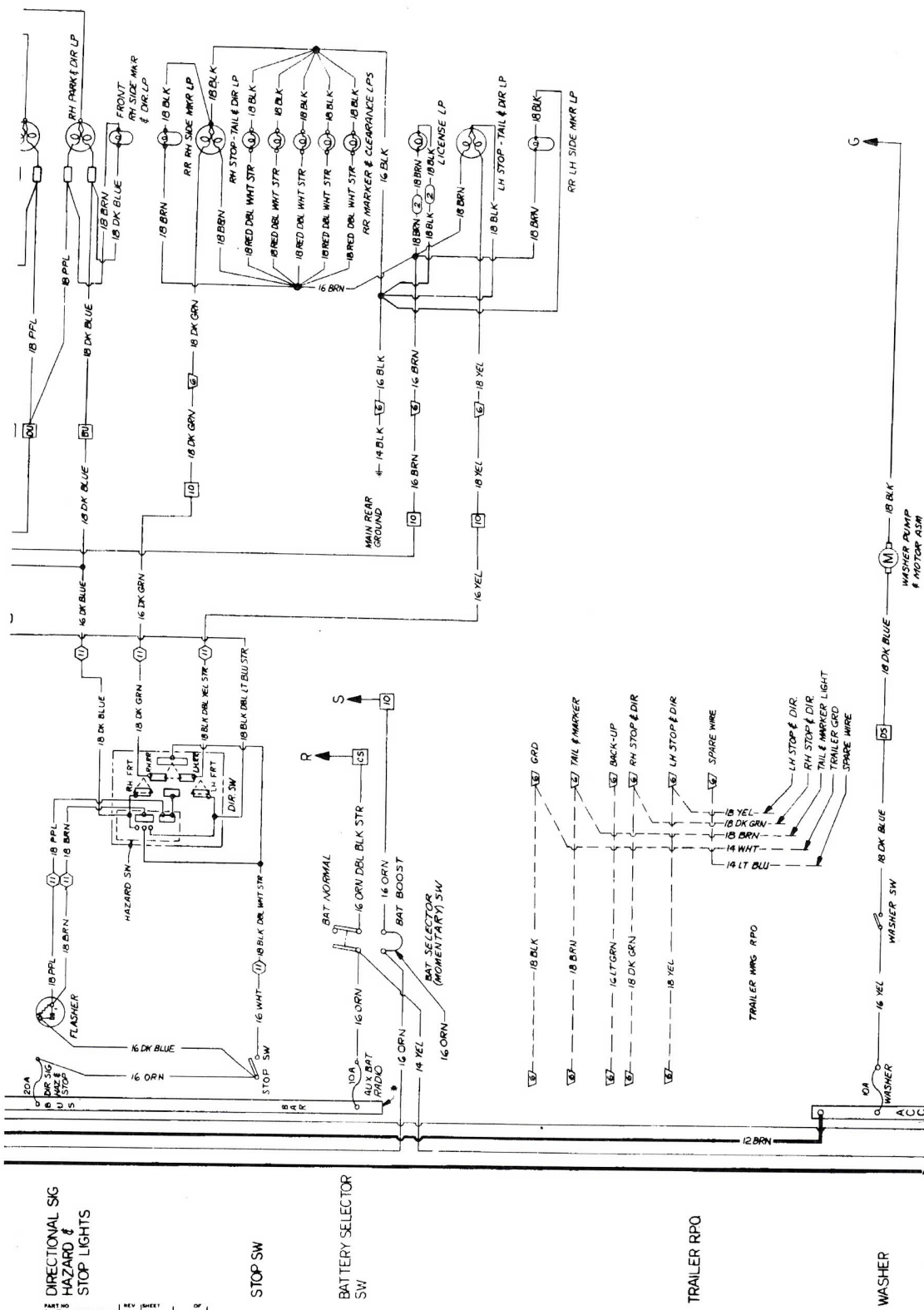
PRINTED CIRCUIT CONNECTOR RECEPTACLE





DIRECTIONAL SG  
HAZARD &  
STOP LIGHTS

MD-12923 REV SHEET  
A 1 2 3 4



STOP SW

BATTERY SELECTOR SW

TRAILER RPO

WASHER









